

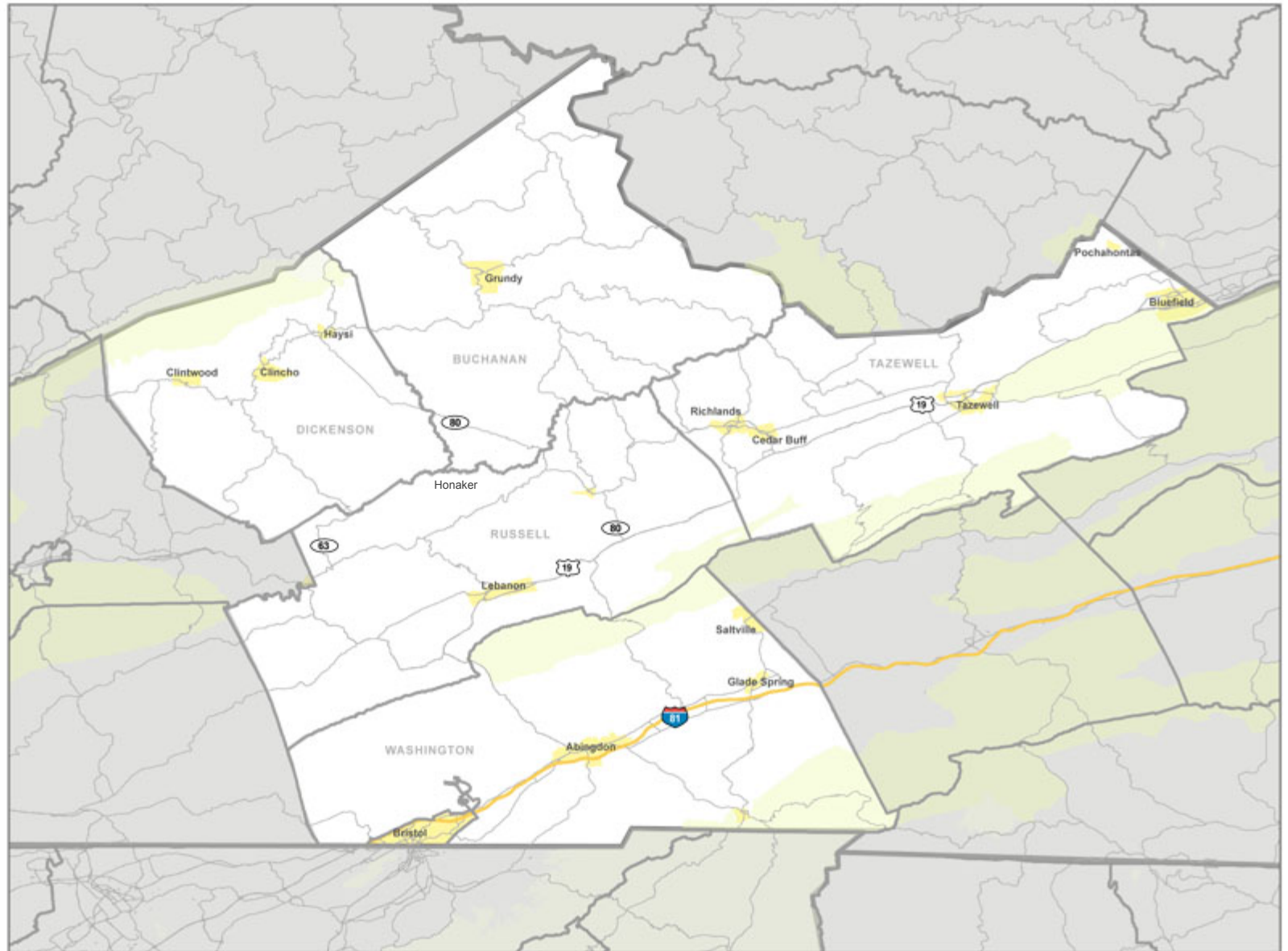
# Cumberland Plateau PDC + Washington County

## 2011 Food System Assessment



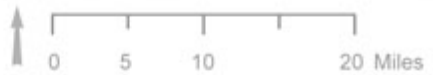
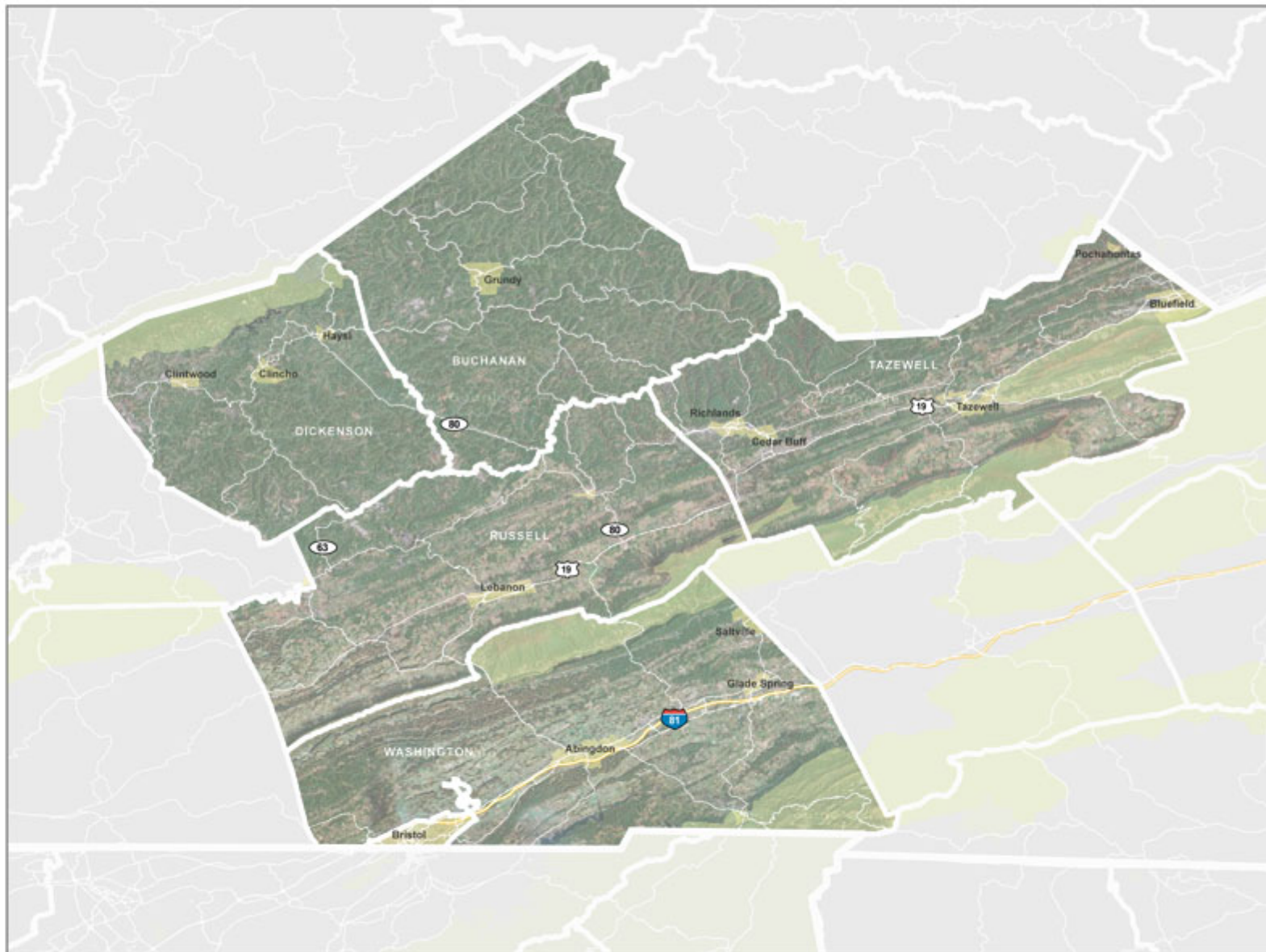
# Dickenson, Buchanan, Russell, Tazewell and Washington Counties

- Highways —
- State Line □
- County Line —
- Roads —
- National Park ■
- Urban Areas ■



# Terrain

- Highways —
- State Line □
- County Line —
- Roads —
- National Park ■
- Urban Areas ■



# A Unique Physical Landscape



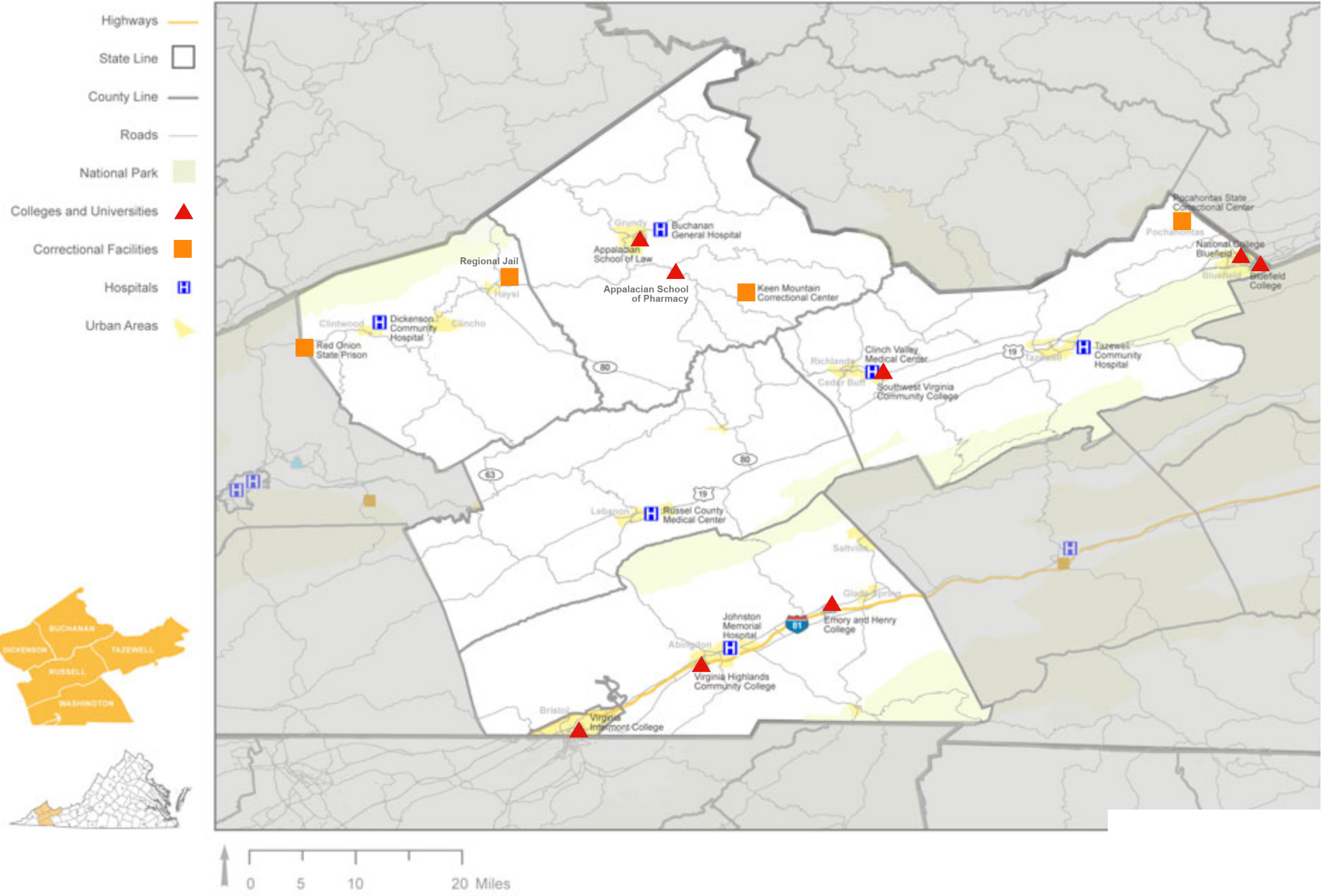
# A Rich Agricultural History and a Culture of Independent Farmers



# An Active Market for Locally-Produced Goods



# Serving Various Population Centers: Universities, Hospitals and Correctional Facilities



# Well-Established Agricultural Organizations and Initiatives



## **Serving Locally Sourced Food**

- Pizza Plus
- Food City
- Independent Restaurants

## **Distributing Locally Sourced Food**

- Farmers Markets
- Appalachian Sustainable Development



# Well-Established Agricultural Organizations and Initiatives



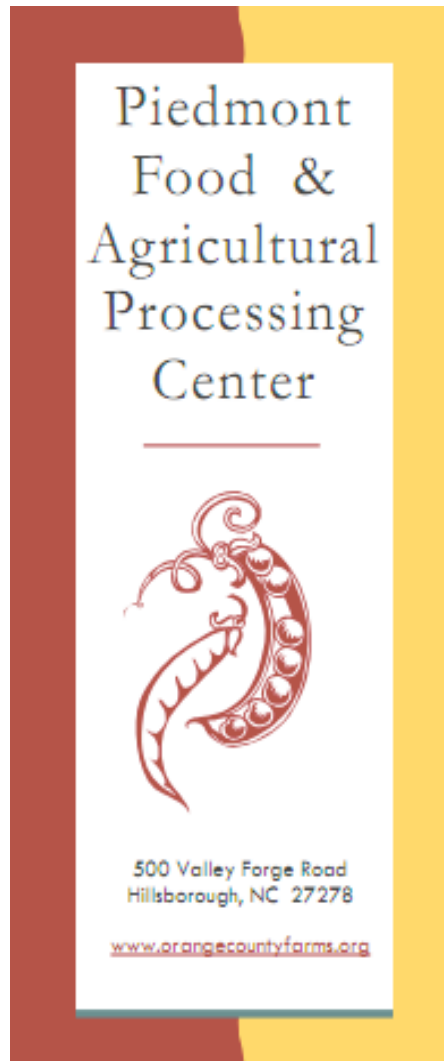
## **Agricultural Education and Research**

- Powell River Research Project
- People Inc.

## **Support for Farmers and the Community**

- Appalachian Sustainable Development
- Coal Field Agricultural Center
- Appalachian Agency for Senior Citizens
- Agricultural Associations

# Inspiration from Similar Communities



- Exceptional example of cooperation amongst localities in a region
- Similarities: rural, agricultural heritage, tobacco
- Differences: transportation system, proximity to major populations
- Feasibility Study – private funding (local grocers)
- Small business incubator for food entrepreneurs
- Model: Blue Ridge Food Ventures (Asheville, NC)

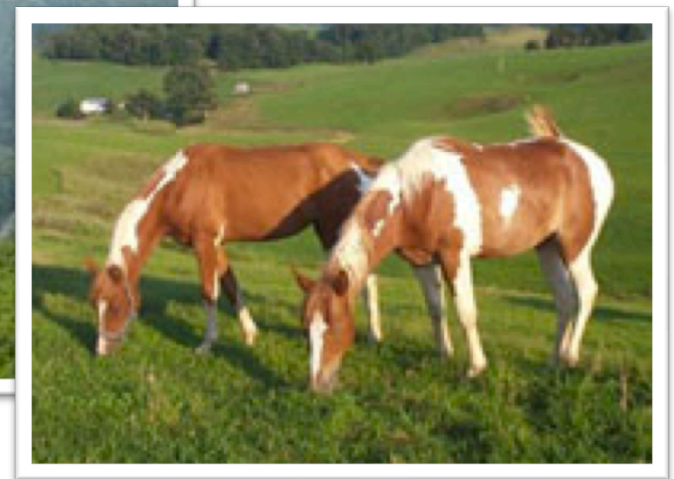
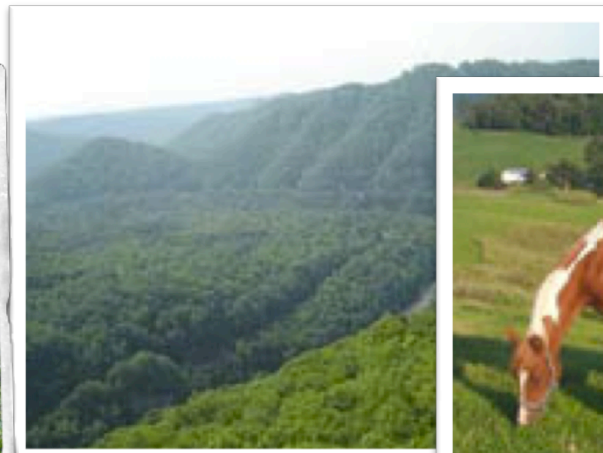
# Inspiration from Similar Communities



- Getting things done with less – low overhead, minimal grants
- Internet based – virtual farmers market
- Large number of volunteers
- Producers & consumers members
- Only sell locally grown or processed
- Nearly \$1 million into the pockets of local food producers each year

# Ideas from the SW Community

- Improve road system and access
- Continue to adapt distribution models to farmer needs and traditions
- Coordinate a "System Method" of farming
- Promote Agritourism



# Opportunities for the Future

- Build upon the cultural and agricultural history.
- Create agricultural and business models that will fill the demand for locally sourced goods.
- Take advantage of existing population centers.

