

Louisa County, VA Community Food Systems Audit



Brief Introduction to Louisa County

10% Urban

71% Forest lands

16% Crop, pasture, and open land

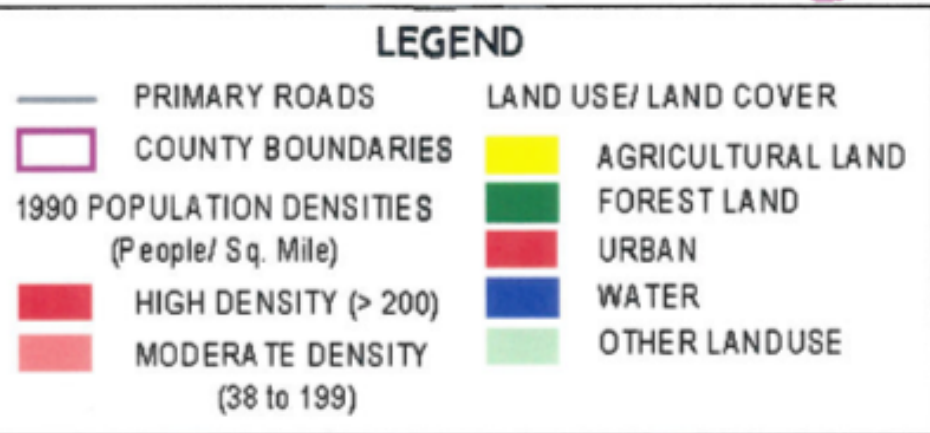
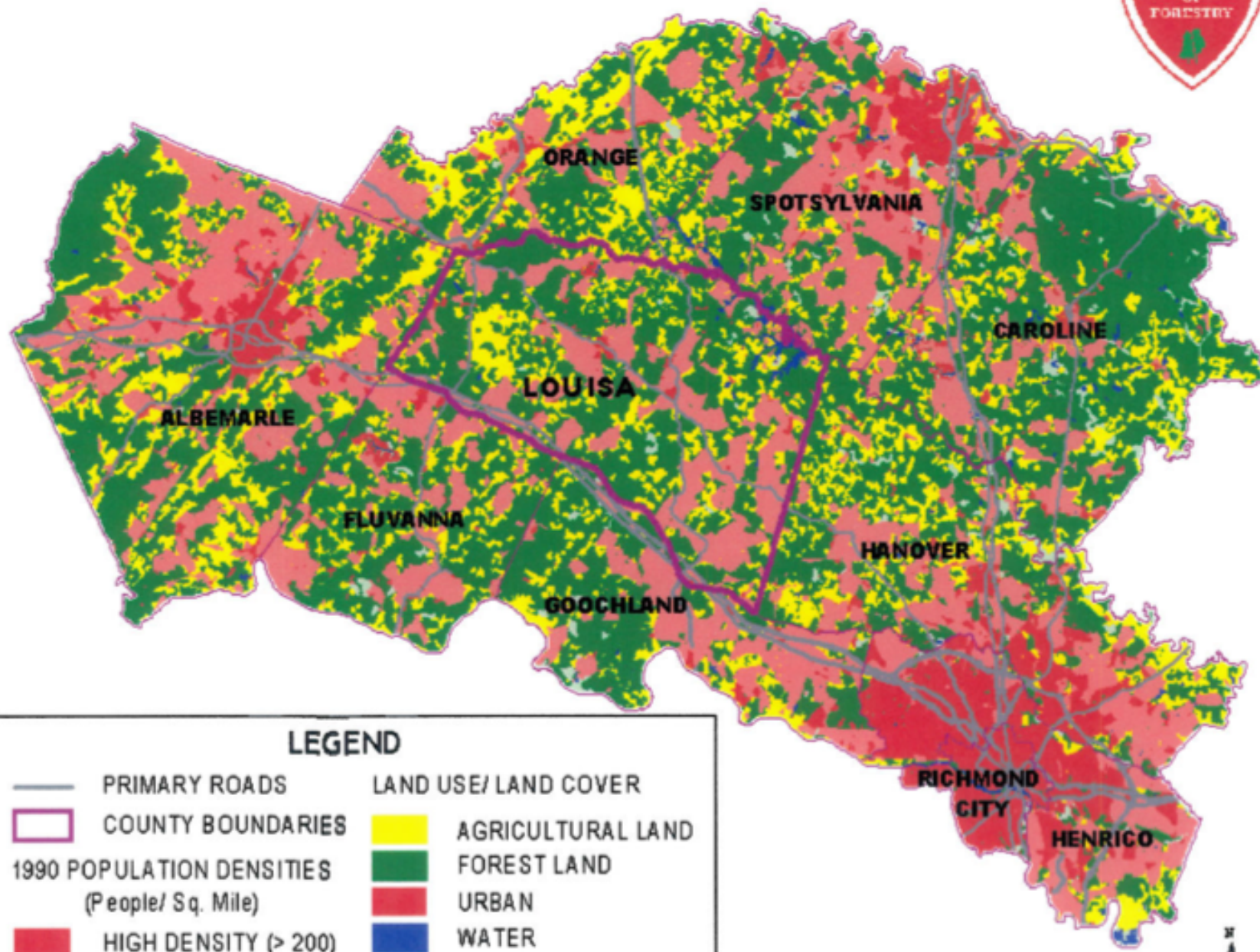
Louisa County's Comprehensive Plan emphasizes:

- Maintaining their rural heritage**
- Promoting environmental stewardship**
- Promoting agriculture and forestry**

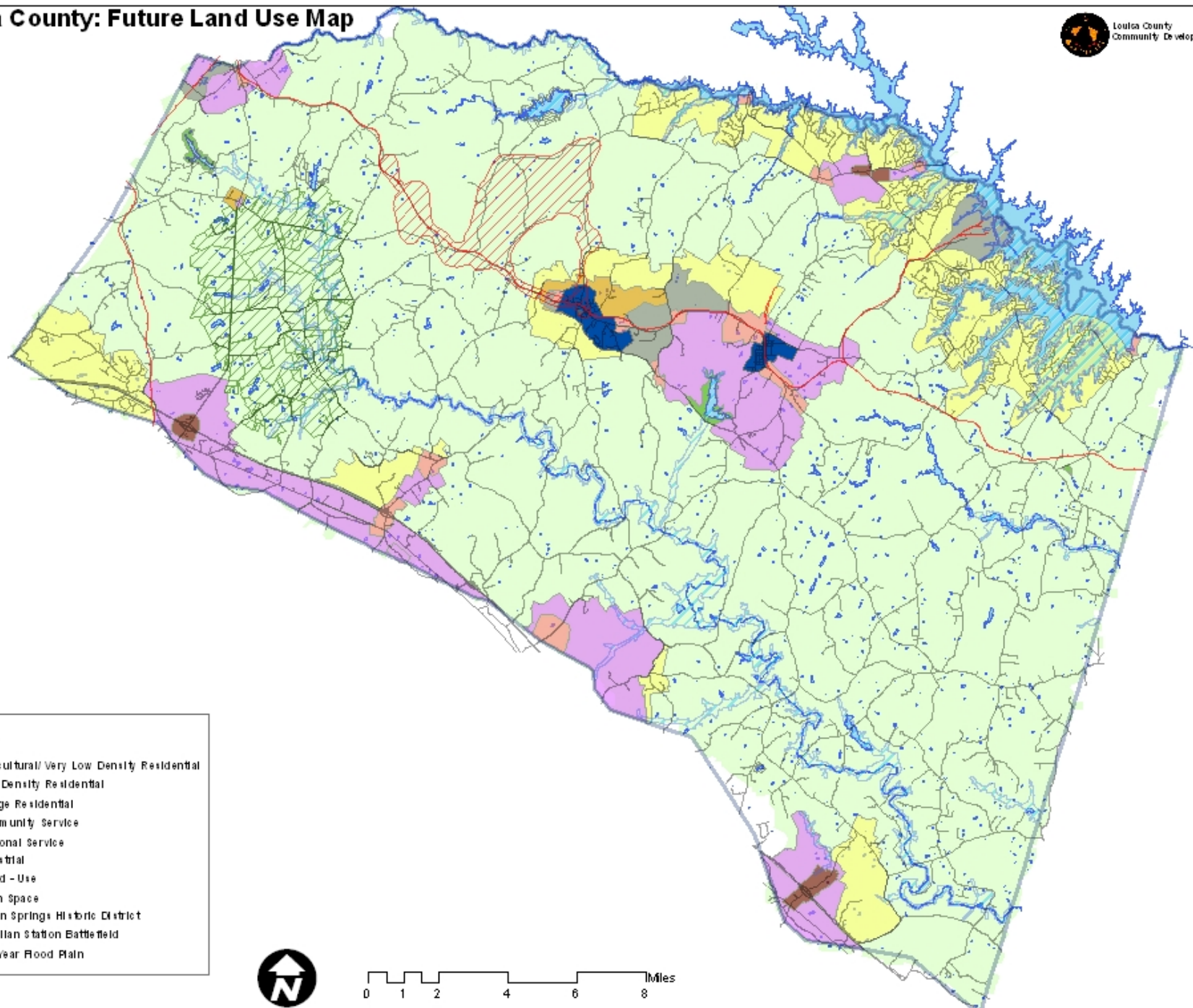
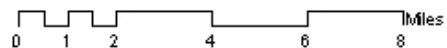
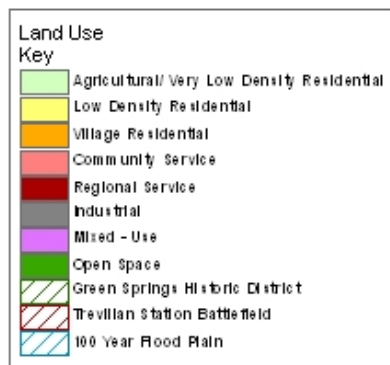
Important areas:

Lake Anna, Green Springs, Twin Oaks

Map 2: Louisa County Population Densities and Forest Resource Distributions



Louisa County: Future Land Use Map



Document review and initial document findings

Comprehensive Plan, zoning ordinances, municipal code, school system website, Louisa County website, regional JABA

****No language related specifically to food**

- o Most policies on land conservation and environmental concerns**
- o JAUNT only public transport**
- o Not much info to be found online**

Community Stakeholders

Conducted seven interviews

Donna Isom

Director, Community Cupboard

Jeremy Camp

Director, Community Development

David Holtzman

Senior Planner, Community Development

Randy Herman

School Nutrition Director, Louisa Public Schools

Tracy Nedza

Extension Agent, Extension Office

Ginger Dillard

Nutrition Services, Betty Queen Center

Becky Vigon

Manager, Mineral Farmer's Market

Example Interview Questions

What do you do as [job position]?

What comments or questions do you have about our food policy audit?

How would you say food policy (or lack of) affects you in your line of work?

Do you think fresh, nutritious food is generally available and accessible to most Louisa residents?

What policy options do you think are most important in improving access and availability?

Public Health

Strengths:

- No junk food in schools; more whole grains
- Recommended reduced pesticide use

Opportunities:

- Open space community gardens?
- Garden plans at Community Cupboard, schools
- More transportation

Challenges:

- No raw meat preparation allowed in schools



Economic Development

Strengths:

- 9.2% of Louisa's agricultural/forestral lands are AFDs

Opportunities:

- More support, fewer restrictions for small farms
- BuyLocal
- Regional distribution center?

Challenges:

- Not enough interest in agriculture as a profession



Environmental Benefits

Strengths:

- **Gleaning**
- **Protection of environmental areas, riparian buffers**

Opportunities:

- **More education about good growing practices**
- **More gleaning, sharing of food and resources**

Challenges:

- **Food Lion does not allow gleaning of meat and produce items.**



Social Equity

Strengths:

- **JAUNT buses**
- **The Community Cupboard - industrial refrigerators**

Opportunities:

- **EBT at farmers markets**
- **More coordination and awareness of resources**

Challenges:

- **Transportation infrastructure**



Land Conservation / Access to Land for Food Production

Strengths:

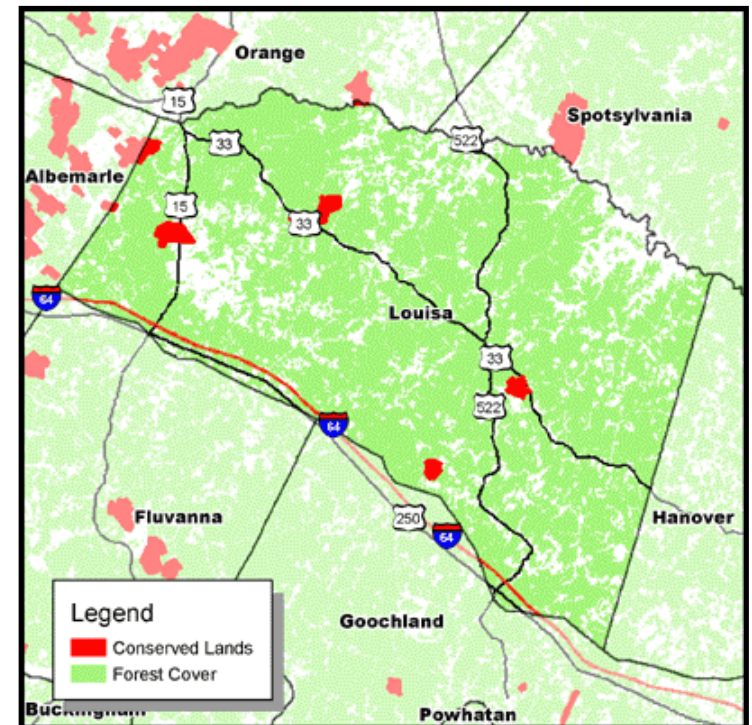
- Conservation maps
- Taxes used to preserve agricultural and forestal lands
- Conservation is key value

Opportunities:

- Encouraging young people to go into farming
- Preservation of rural character
-> agriculture promotion

Challenges:

- Shift from preservation to food production



Top Five Priorities for Louisa

- **Community gardens**
- **Improved transportation**
- **Procurement of local foods, especially in schools**
- **Increasing awareness and promoting farming as a profession**
- **Helping local farmers find a place in the market (farmers markets, grocery stores) and removing restrictions**



Acknowledgements

Thanks to all who met with us for interviews!

Jeremy Camp, *Director of Community Development*

Ginger Dillard, *Nutrition Services, Better Queen Center*

Randy Herman, *Nutrition Director, Louisa Co. Public Schools*

David Holtzman, *Senior Planner of Community Development*

Donna Isom, *Director of Community Cupboard*

Tracy Nedza, *Louisa Co. Extension Office*

Becky Vigon, *Mineral Farmer's Market*

Tanya Denckla Cobb

Tim Beatley

Jessica Ray



GREENE COUNTY, VA FOOD POLICY AUDIT

Stuart Andreason
Jennifer O'Brien
Katie Wolfe



GREENE COUNTY		VIRGINIA
Poverty	6.6% / 15.1% in Stanardsville	9.90%
Median HH Income	\$45,931	\$46,677
Unemployment	1.9%	2.7%
Educational Attainment (25+ With a BA or Higher)	19.8%	29.5%
2007 Pop. Growth Rate	17.2%	8.9%
Top Crop Items (acres)	Forage, Corn, Grapes	Forage, Soybeans, Corn
Top Livestock (number)	Turkeys, Cattle, Pheasants	Chickens, Turkeys, Layers
Average Age of Farmer	61	58
Students Approved for Free or Reduced Lunch	33%	37%

*2000 Decennial Census; 2007 Weldon Cooper Center for Public Service; VDACS; Annie E. Casey Foundation, 2009;
2007 U.S. Agricultural Census, April 2010 Bureau of Labor statistical poverty estimate TJPDC 6.4%, Virginia 7.4%*

Community Contributors

Matt Benson

Community Viability Specialist, VCE

Judy Berger

Community Nutrition Manager, JABA

Debbie Brown

*Assistant Superintendant of Human Resources
and School Wellness Committee Member, GCS*

Roy Dye

*Executive Director, *STAR**

Carole Haas

Supervisor of School Nutrition, GCS

James Howard

Director of Dept. of Social Services

Cathryn Kloetzli

Farmers' Market Manager, VCE

Don Pamenter

*President, *STAR**

Tony Williams

Economic Development Authority Manager



GREENE COUNTY FOOD POLICY AUDIT



Overall Strengths

- Appreciation of **agricultural heritage** as an economic asset
- Festivals and events highlighting **local food and culture**
- Churches and non-profit organizations addressing **food access**
- Schools increasing the **availability of fresh produce**
- Urban growth boundaries are in place to help direct development and **preserve farmland.**



Overall Challenges

- Younger population has **little interest in agriculture**
- Organizations providing **food assistance lack continuity**
- Schools do not have the **time, money and workforce** to provide the meals and nutrition education desired
- **High growth rate** requires strict adherence to growth boundaries



Public Health

Strengths

- GCS Students have responded positively to an increase healthy foods
- Stanardsville farmers' market
- Strong JABA presence advocating for fresh, local food
- Innovative use of USDA Commodities \$

Challenges

- GCS lack of time and money needed to include more fresh, local vegetables
- The commuting nature of many families may limit time to consider health, wellness, and food choices



Economic Development

Strengths

- Wineries and small farms
- Technical support from EDA and SBDC
- Incoming Walmart in Ruckersville
- Plan to create agricultural heritage marketing tools
- Festivals and fairs

Challenges

- Defining “local”
- Equality in regulation of large and small food providers
- Difficult to attract small business owners
- Youth population shows little interest in agriculture
- Incoming Walmart in Ruckersville



GREENE COUNTY FOOD POLICY AUDIT



Economic Development

Tourism

- Agricultural
- Civil War
- Food + Wine

Phone: 434.985.6663 Email Us [Contact Us](#) [County Info](#) [Economic Dev.](#)



GREENE COUNTY, VIRGINIA
Tourism

HOME ABOUT US INTERACTIVE MAP CALENDAR OF EVENTS BUSINESSES & ATTRACTIONS COMMENTS LINKS

Businesses & Attractions: Annual Events



Battle of Stanardsville Reenactment
Every September, the sights and sounds of the Civil War echo across the fields of Greene County, VA as history buffs reenact the Battles of Stanardsville and Rio Hill. Will you defend The Cause? Or will you join with the Union army to see that Virginia once again joins the United States of America? This event features exciting battle scenes, historical demonstrations, carriage rides, shopping, a period-accurate ball and plenty of activities for children. For more information and to register, visit their website.
Saturday & Sunday, September 18 - 19, 2010
Reenactment Field, US Route 33 (1 mile west of US 29), Ruckersville
Organizers: Patti Wilson, 434-825-4478, patti.wilson19@yahoo.com
www.stanardsvillereenactment.com



Fourth of July Parade
Enjoy an authentic small-town-America 4th of July parade in historic downtown Stanardsville. Celebrate Independence Day surrounded by buildings that were standing during our nation's beginnings. The festive parade down Main Street will be followed by a patriotic program on the Court House Square, with a reading of the Declaration of Independence and musical performances. Food, ice-cream, and soft drinks will be available for purchase.
Sunday, July 4, 2010
Main Street, Stanardsville
Organizers: "STAR", Roy Dye, Executive Director, 434-985-6663, radye@earthlink.net



Greene County Fair
Experience the fun and back-home warmth of a real, rural county fair and its people. Music, carnival rides, home made food and craft exhibits, farm animal auctions, great fair food and much more can be enjoyed in a beautiful setting at the foot of the Blue Ridge Mountains. The fair ends on Saturday with a rip-roaring demolition derby.
Tuesday - Saturday, August 10 - 14, 2010
Greene County Fairgrounds, Route 230 (Madison Road) off of Route 33 Business, Stanardsville
Organizers: Van Bowman, 434-960-5312; Ed Lumadue, 434-985-3226, eslumadue@yahoo.com
greencountyfair.tripod.com





GREENE COUNTY FOOD POLICY AUDIT



Environmental Benefits + Land Conservation

Strengths

- 2010 Comprehensive Plan goal to increase conservation through easements and TDR
- Urban growth boundary
- Voluntary riparian buffer program

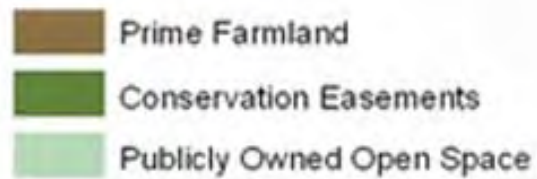
Challenges

- Lack of policy regarding pesticide use
- Very high population growth rate + development needs

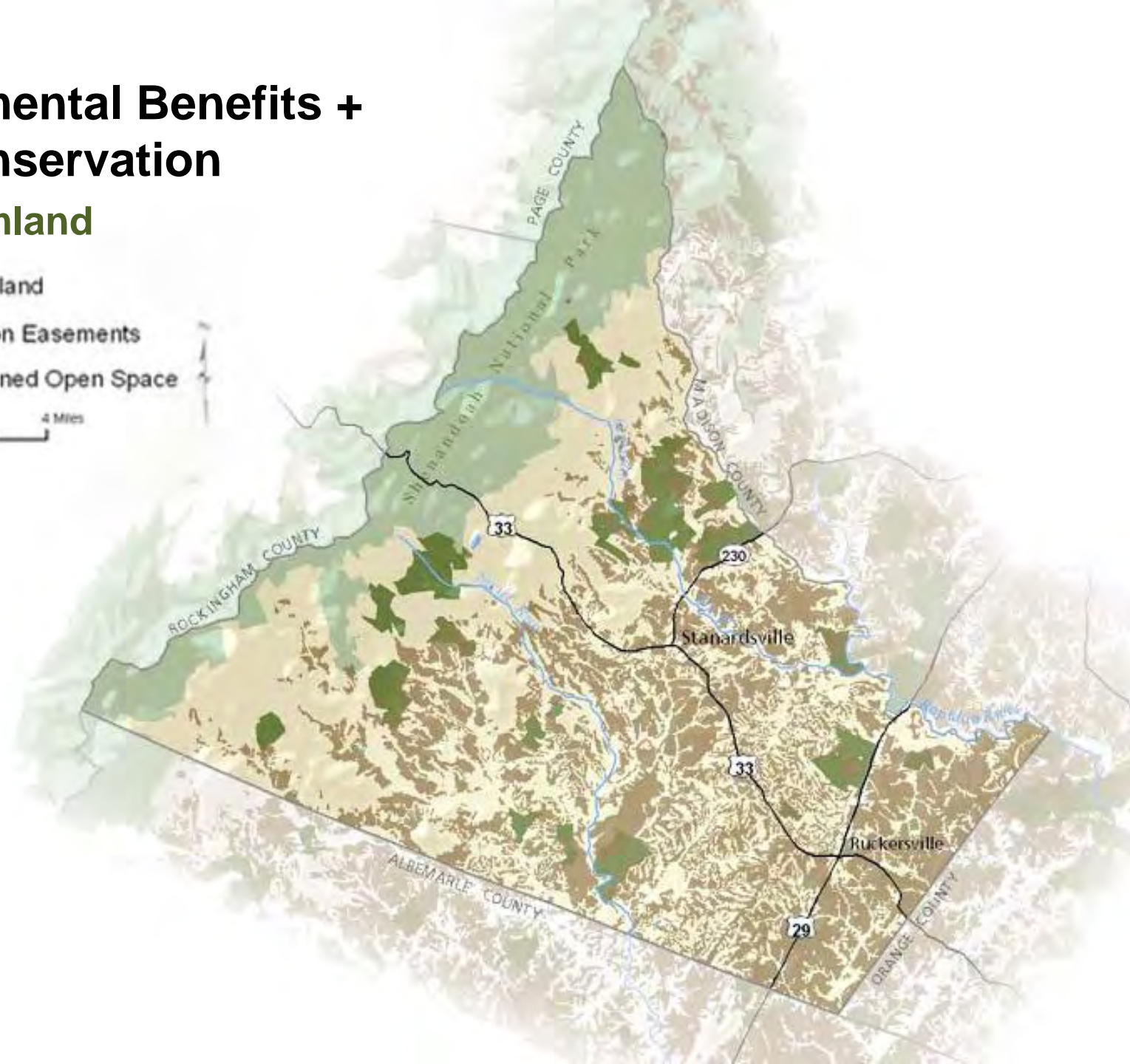


Environmental Benefits + Land Conservation

Prime Farmland

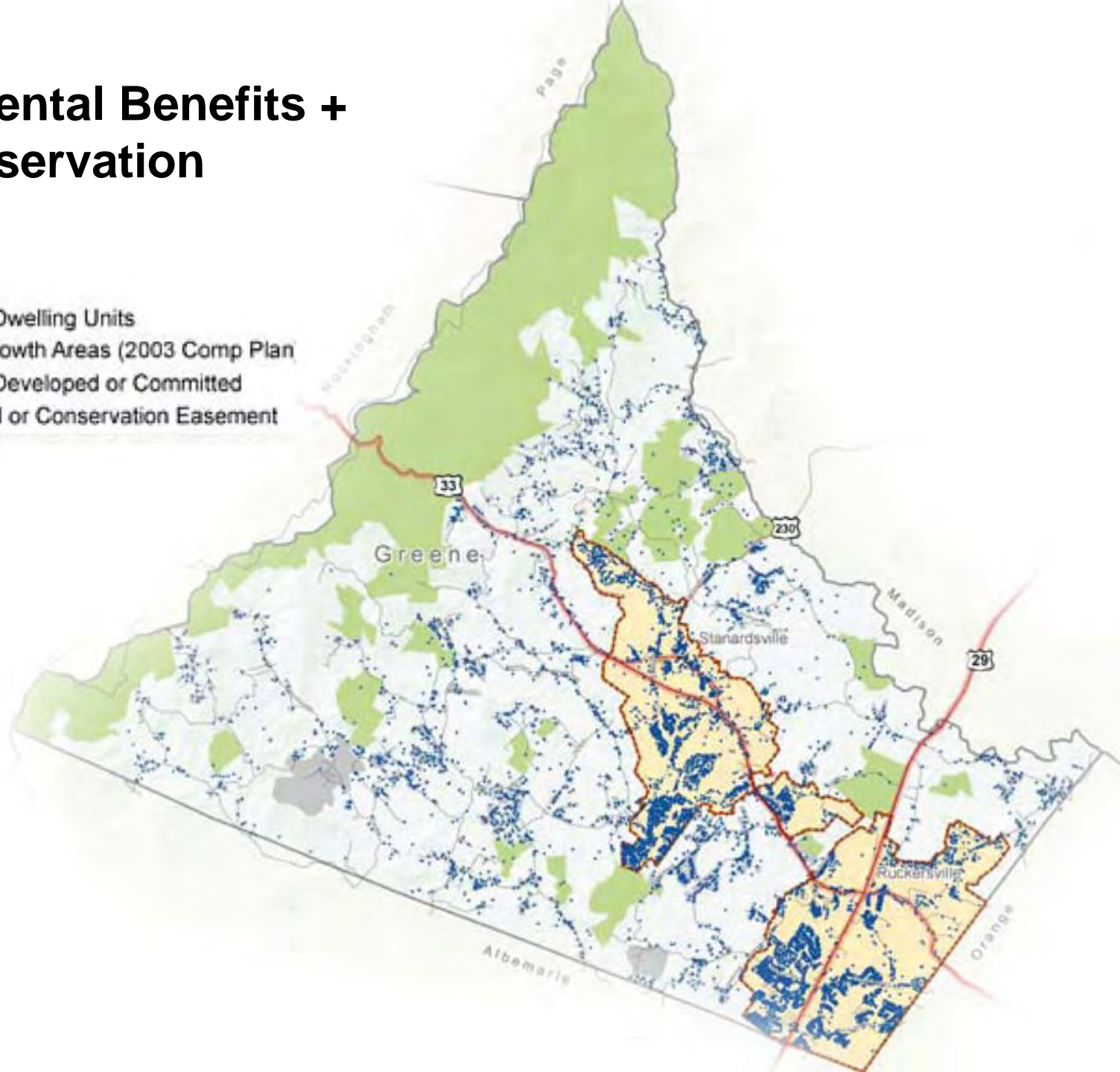
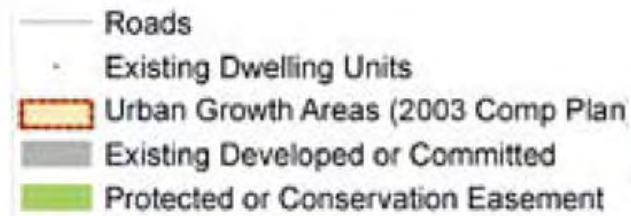


0 2 4 Miles



Environmental Benefits + Land Conservation

Land Use



Social Equity

Strengths

- STAR increasing pedestrian access to groceries + make restaurants more viable.
- JABA is working to increase local food consumption + access
- VCE is working to increase the visibility and capacity of farms.
- Multiple church food banks and soup kitchens

Challenges

- Farmers' market prices are too high for low income population / no EBT at the farmers' market
- No comprehensive effort to combat food insecurity
- Minimal public transportation options



GREENE COUNTY FOOD POLICY AUDIT

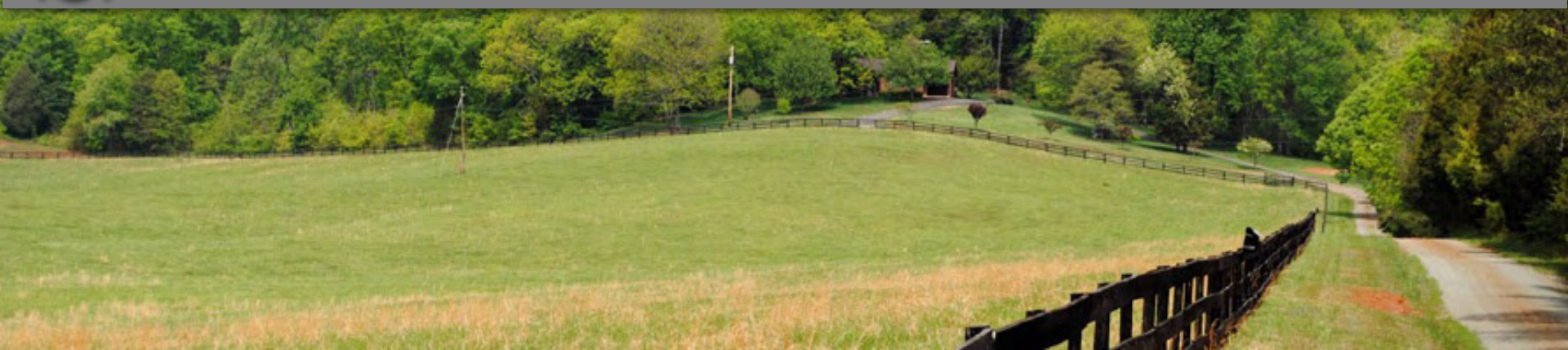


Moving Forward

- **Improve nutrition education** in the community
- Provide direct **entrepreneurial support** to local producers
- **Address food insecurity** in a more comprehensive manner
- Protect and **capitalize on existing assets**
- Continue the **food conversation**



GREENE COUNTY FOOD POLICY AUDIT



Recommendations from the Community

Re: Nutrition Education

- Make nutrition education **part of curriculum** in schools.
- Organize a **health fair**.
- Create a **garden club** or program for students.
- **Mandatory physical education** every day. Offer **gardening**.
- **More money** for fresh foods + the labor necessary to supply them.



GREENE COUNTY FOOD POLICY AUDIT



Recommendations from the Community

Re: Food Insecurity

- Purchase an **EBT machine** for the farmers' market.
- Ensure the affordability and accessibility of the farmers market is publicized through the VCE and DSS.
- Make nutrition education available/required for low-income residents.
- Encourage gleaning from markets.



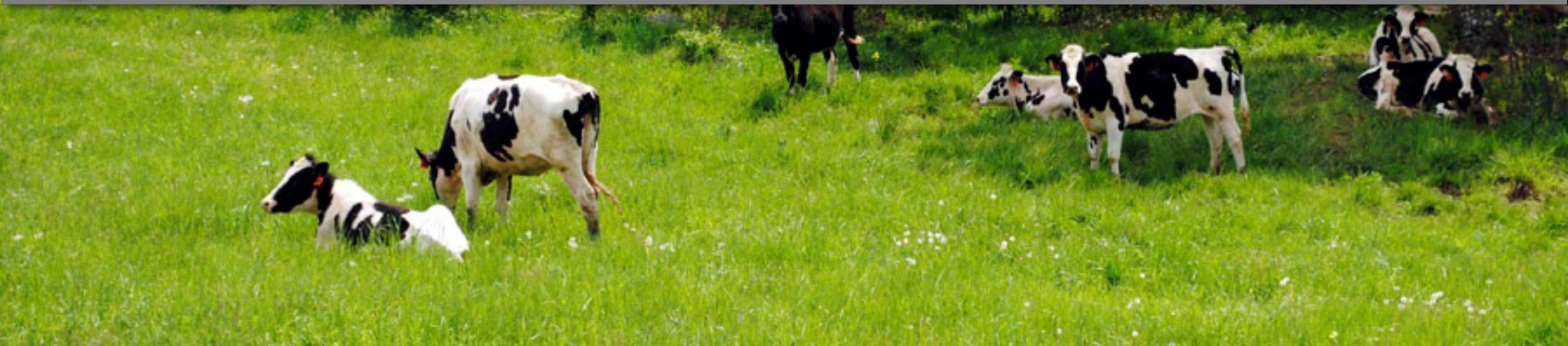
GREENE COUNTY FOOD POLICY AUDIT



Recommendations from the Community

Re: Protect and Capitalize on Exiting Assets

- Encourage VCE to run classes on farm labor skills/vineyard maintenance in Greene.
- Use the heat generated at gas stations to heat greenhouses.



Recommendations from the Community

Re: Provide Entrepreneurial Support

- Provide grants to small business/farm owners.
- Require grocery stores in the county to sell a minimum amount of local goods.



Continue the Conversation...



GREENE COUNTY FOOD POLICY AUDIT





Fluvanna County Food Policy Audit

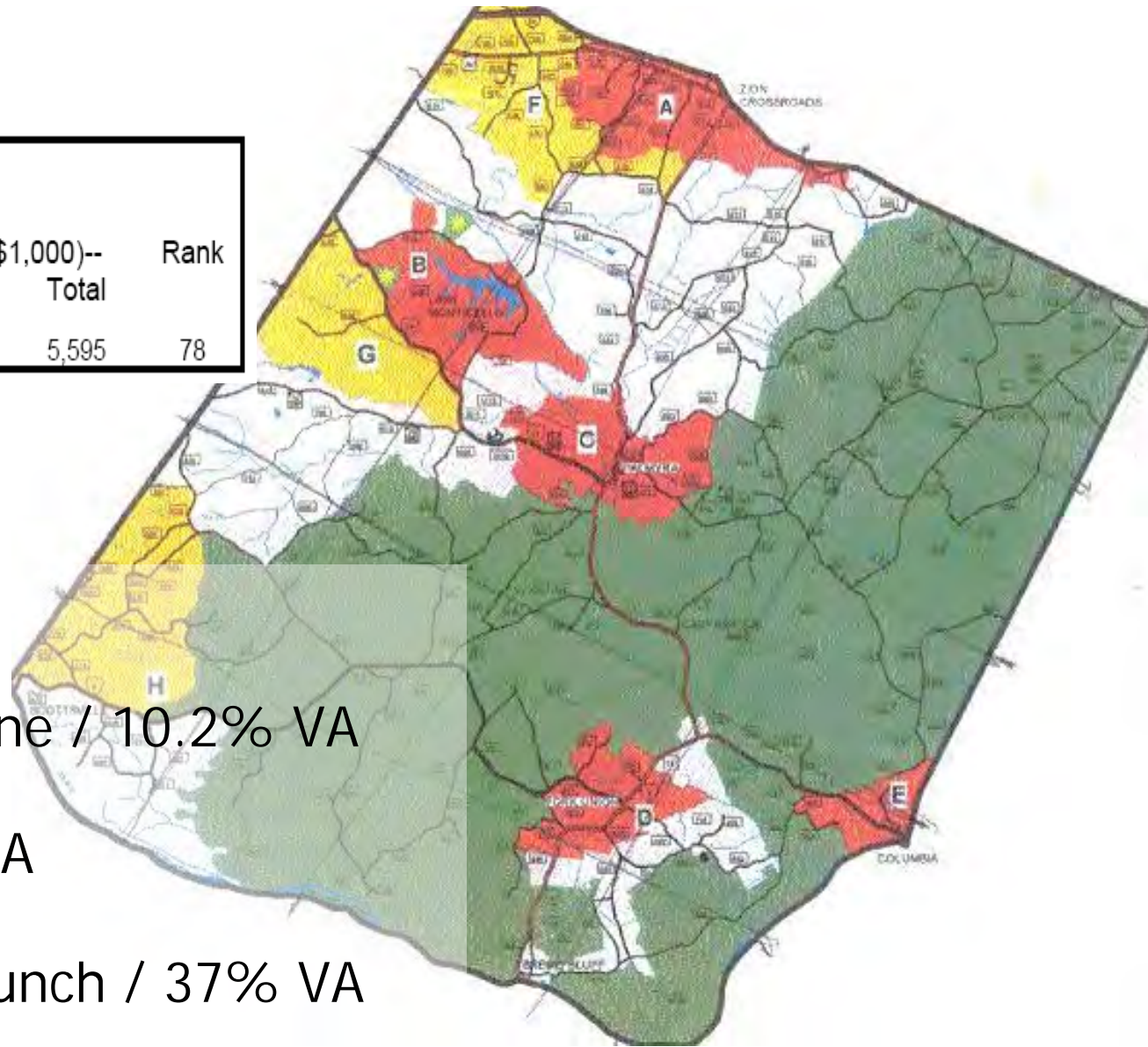
Will Bolton, Carla Jones, and Ben Pinover

Overview of Fluvanna

2007 CENSUS DATA:

No. Farms	Acres In Farms	Harvested Cropland	--Cash Receipts (\$1,000)--			Rank
			Crops	Livestock	Total	
327	48,883	13,249	2,655	2,940	5,595	78

- 25,195 residents
- 5.8% below poverty line / 10.2% VA
- 5% on SNAP / 8.2% VA
- 12% eligible for free lunch / 37% VA



Methods

- Document research
- Community Partners:
 - John Thompson
 - Elizabeth Fortune
 - Jane Gatewood
 - Darren Coffey
 - Dwight Godwin
 - Vicki Karabinus
 - Joan Farren
 - Bertha Armstrong
 - Mozell Booker
- Planning Commission Report

A photograph of a community garden. In the foreground, several large, green lettuce plants are growing in a raised bed filled with dark brown mulch. A small, young plant with orange leaves is also visible. In the background, there are more garden beds, some with wooden borders, and a fence. The overall scene is outdoors with green foliage in the distance.

Public Health

- Strengths
 - Obesity
 - Wellness Plan
 - Community Gardens
 - Farmers' Market
- Opportunities
 - Obesity
 - Farm to School Program

Social Equity



- Strengths
 - Schools
 - Coordination
 - Free Community Garden Plots
- Challenges
 - Time
 - Access
- Opportunities
 - EBT Program



Economic Development

- Strengths
 - Farmers' Market
 - Economic Development Plan
- Challenges
 - Diversifying Farmers' Income
- Opportunities
 - Public Outreach

Environmental Benefits



- Strengths
 - "The most livable and sustainable community in the United States."
 - Voluntary Livestock Fencing
 - Bio-solids Management
- Challenges
 - Chesapeake Bay Watershed
- Opportunities
 - Land Conservation

Fluvanna County 2029 Future Land Use Map

Not to Scale

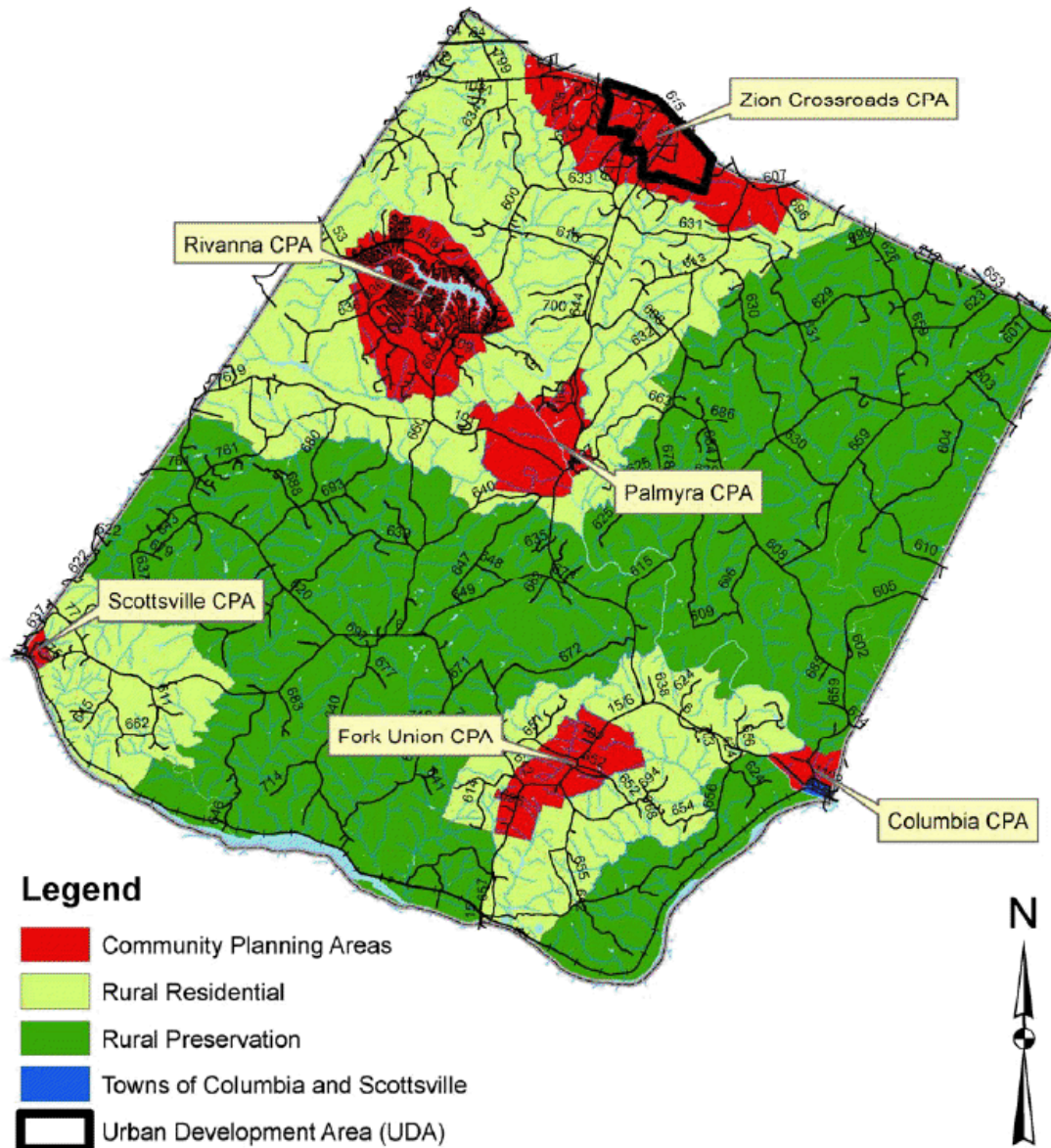


Figure LU-23, 2029 Future Land Use Map

Land Use

- Strengths
 - Farmers' Market
 - Pleasant Grove
 - Growth Management
 - Land Use Taxation
- Challenges
 - Restrictive Zoning
- Opportunities
 - Supporting Diversified Incomes for Farmers

Community Priorities

- 
- Land Preservation
 - Obesity
 - Community Gardens
 - Farmers' Market

A photograph of a community garden with various plants, including green leafy vegetables in the foreground and taller plants in the background, all growing in raised beds with brown mulch. The title text is overlaid on a white rectangular box at the top of the image.

Recommendations from Community Partners

- Land Use
 - Zoning
- Economic Development
 - Farmers' Market
- Expand Initiatives
 - Social Justice
 - Shifting Culture



FLUVANNA
PROUD
OF OUR PAST ...
CONFIDENT
IN OUR FUTURE

Nelson County, Virginia

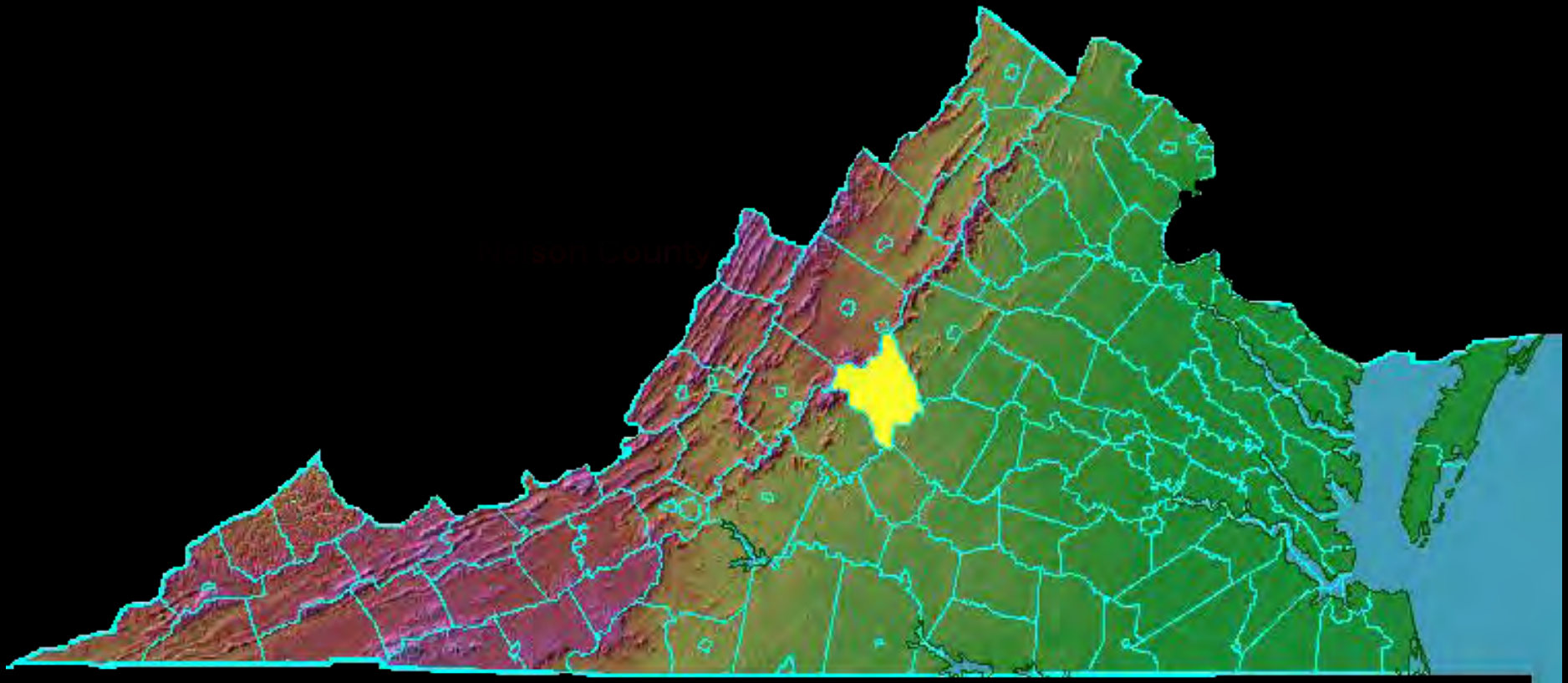
Food Policy Audit

Spring 2010



Forkland Farm
Lovington, VA

Dana Smith
Keith Crawford
Sara Teaster



<http://www.virginiaplaces.org/vacount/graphics/nelson.gif>

Nelson County, Virginia

- Nelson county was founded in 1807
- Total land space 471 square miles (302,000 acres)

A Farming Community

- 73,000 acres is in farmland, or 24% of county
- #4 in state for fruits/ tree nuts and berries
- Over \$12 million in agricultural products annually
- 4% of workforce in agriculture



Nelson County Residents

Total Population	14,445
Individuals Under Poverty Level	12.1%
Families Under Poverty Level	8.5%
School Population	1969 students
Free or Reduced Lunch	49.5%
Commute Outside County	65%



Audit Method

Government



Connie Brennan, Board of Supervisors



Roger Collins, Nelson County Public School Superintendent
Beth Morris, Nelson County Public Schools Nutritionist
Fred Boger, Nelson County Planning Director
Maureen Kelly, Nelson County Economic Development and Tourism

Community



Frances Mitchell,
Jefferson Area Board for Aging,
Nelson County Case Manager

Farmers



Jim Saunders, Saunders
Brothers Orchard, Director of
Human Resources

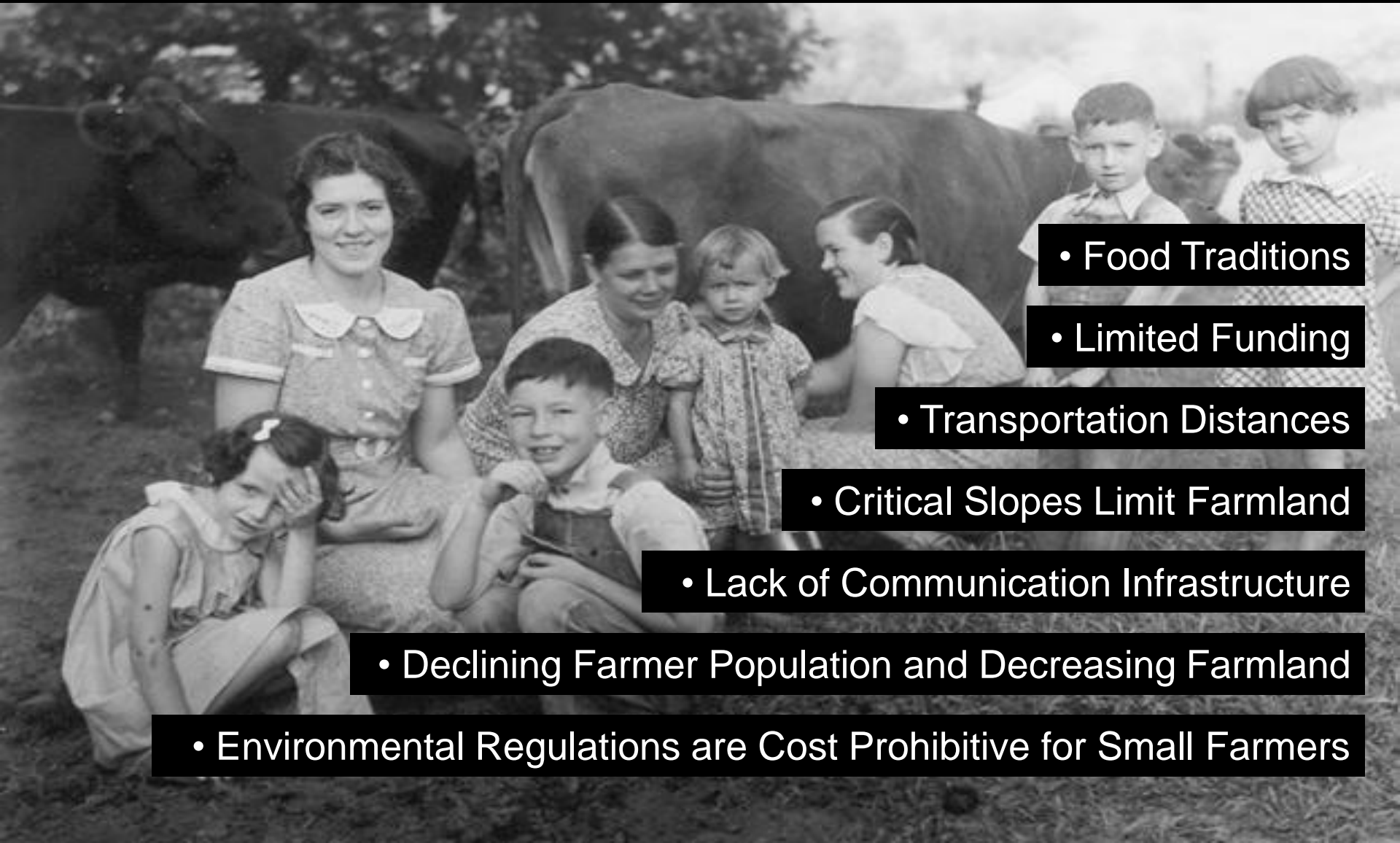
Gary and Jeanne Scott, Twin
Springs Farm, owners



Strengths

- 
- School Wellness Policy
 - Strong Sense of Community
 - Committed Non-Profit Organizations
 - Values and Support for Land Conservation
 - Economic Development Support for Agritourism

Challenges



- Food Traditions
- Limited Funding
- Transportation Distances
- Critical Slopes Limit Farmland
- Lack of Communication Infrastructure
- Declining Farmer Population and Decreasing Farmland
- Environmental Regulations are Cost Prohibitive for Small Farmers

A photograph of several pumpkins resting on a wooden surface. The pumpkins are in various stages of ripening, with some showing bright orange skin and others more greenish-yellow. The stems are dark and prominent. A black rectangular box is superimposed over the center of the image, containing the text "Community Priorities" in white.

Community Priorities

Support More Local Purchasing



Local Food Hub

Increase Variety of Crops and Land in Production



Hop Farm, Blue Ridge Mountain Brewery

Educate Nelson County About Food and Obesity Prevention



Support Community Gardens



Improve Food Access



Conclusions

- 
- Strong Food and Agricultural Heritage
 - Agriculture as Central Economic Development Strategy
 - Desire for Positive Change Without Regulation

Citations

- [Slide 1 – Sara Teaster](#)
- [Slide 2- http://www.virginiaplaces.org/vacount/graphics/nelson.gif](http://www.virginiaplaces.org/vacount/graphics/nelson.gif)
- [Slide 3- http://www.roussosweb.com/images/BlueRidgeFarmS.jpg](http://www.roussosweb.com/images/BlueRidgeFarmS.jpg)
- [Slide 4- www.weichert.com/images/counties/VA-Nelson.gif](http://www.weichert.com/images/counties/VA-Nelson.gif)
- [Slide5-http://www.jabacares.org/ ui/images/Button125.png](http://www.jabacares.org/ui/images/Button125.png)
- <http://nelsoncounty.com/boardofsupervisors/>
- http://www.buylocalvirginia.org/img/library/20/nelson_co_logo215x.jpg
- <http://www.saundersbrothers.com/>
- <http://www.twinspringsfarmva.com/>
- <http://www.buylocalvirginia.org/bfbl/images/BFBL-logo.gif>
- <http://mountainarearealty.com/wp-content/plugins/nggallery/nggshow.php?pid=83&width=&height=&mode=>
- http://www.oaklandnet.com/parks/0/121205_tcg.jpg
- [Slide 6- http://www.nelsoncountylife.com/wp-content/uploads/2009/05/farmers-mkt12.jpg](http://www.nelsoncountylife.com/wp-content/uploads/2009/05/farmers-mkt12.jpg)
- [Slide 7- http://www.saundersbrothers.com/heartbeats/photo_gallery.htm](http://www.saundersbrothers.com/heartbeats/photo_gallery.htm)
- [Slide 8- Dana Smith](#)
- [Slide9- http://chofoodhub.blogspot.com/](http://chofoodhub.blogspot.com/)
- [Slide 10- http://www.flickr.com/photos/hand_rail/3608931241/in/set-72157619467095942/](http://www.flickr.com/photos/hand_rail/3608931241/in/set-72157619467095942/)
- [Slide11, 12, 13, 14- Dana Smith](#)

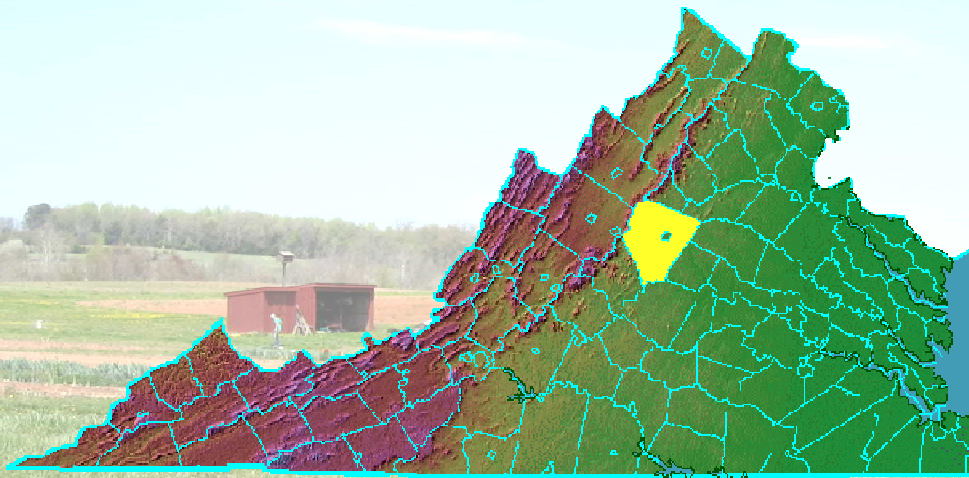


Albemarle County

Food Policy Audit and Policy Recommendations

Emily Baker Laura Brown Colleen Rossier

Albemarle County



- 60% forested
- 95% rural
- Main agriculture: cattle, forage, fruit/tree nuts

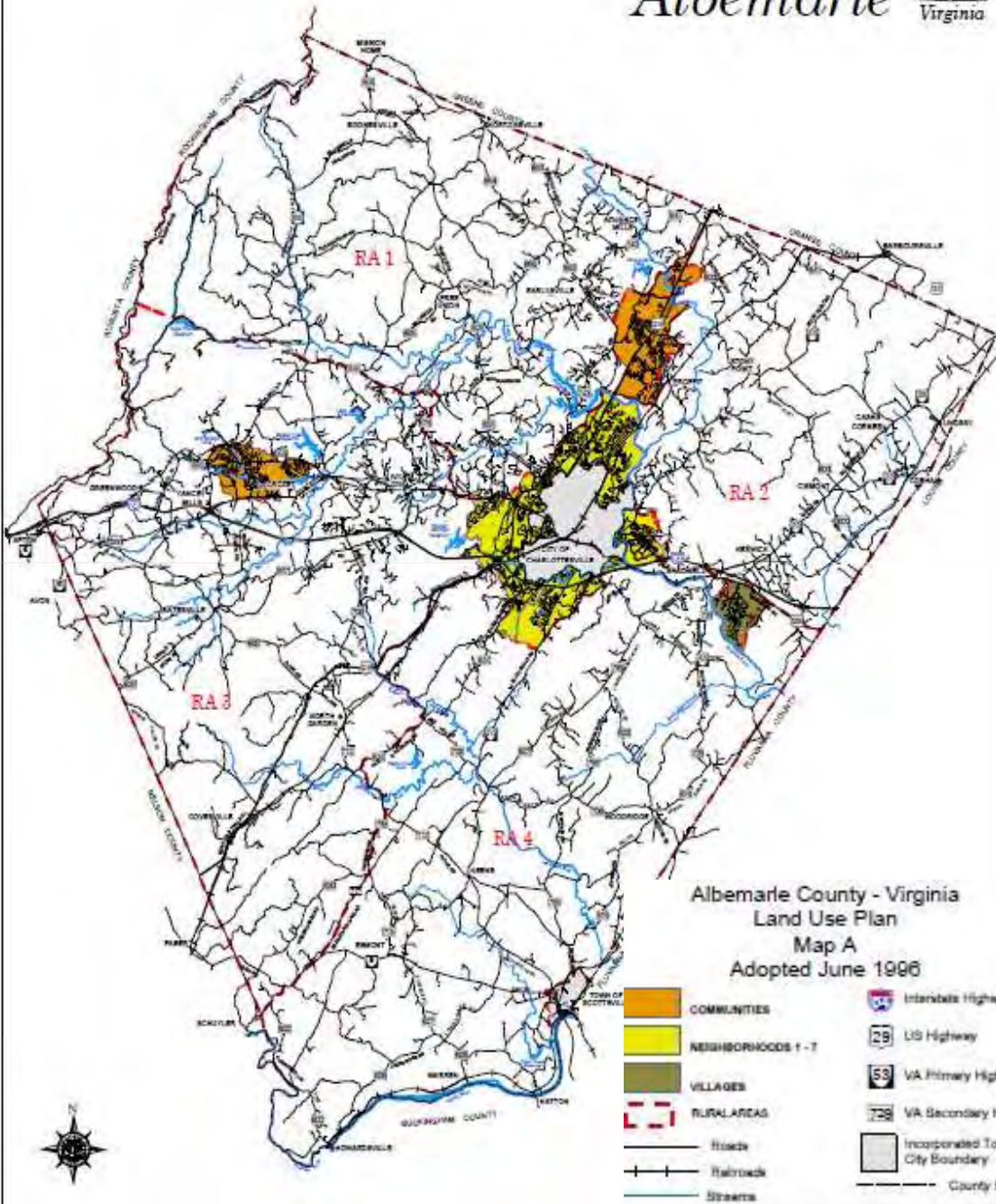
Demographics:

- 93,668 ppl (2008)
- 1% in Ag/Forestry/Hunting
- 8.5% under poverty line
- 16 public elementary, 5 middle, 3 high schools
- 24% students on free/reduced lunch



Prime Farmland

Piedmont
Environmental
Council



Land Use Plan



Comprehensive Plan

11 Community Contacts

Barbara Yager
Community Obesity
Task Force



Juandiego Wade
former-transportation planner,
Albemarle County

Joan McDowell
Principal Planner,
Albemarle County



Ann Mallek
Supervisor for White Hall,
Board of Supervisors

Susan Stimart
Business Development Facilitator,
Albemarle County

Lori Allshouse
Strategic Development Coordinator,
Albemarle County

Pam Carter
Wellness Coordinator,
Albemarle County

Judy Berger
JABA Nutrition Manager

Marissa Vrooman
Local Food Hub

Dawn Story
Piedmont Environmental Council
Programs Coordinator

Wendy Roberman
Entrepreneur,
C'ville Foodscapes



Overview of Albemarle County's Policies:

- More Emphasized Areas:
 - Land Conservation
 - Economic Development
- Less Emphasized Areas:
 - Social Equity

Public Health

- Strengths:
 - Schools: nutrition guidelines, farm to school week
 - Government/school employees: medical weight loss program
 - Community groups: COTF, JABA, Local Motion
- Challenges:
 - Community gardens not encouraged
 - Lack of agricultural and nutrition education
 - No policy for joint-use of school gardens

Economic Development

- Strengths:
 - Government technical support for local food business (CVSBDC, VCE, Workforce Center, “Trails”, Farm Stand Ordinance)
 - Community Groups support local food production (Local Food Hub, PEC)
- Challenges:
 - Technical but not monetary support
 - Lacks local food processing center (kitchen/slaughterhouse)

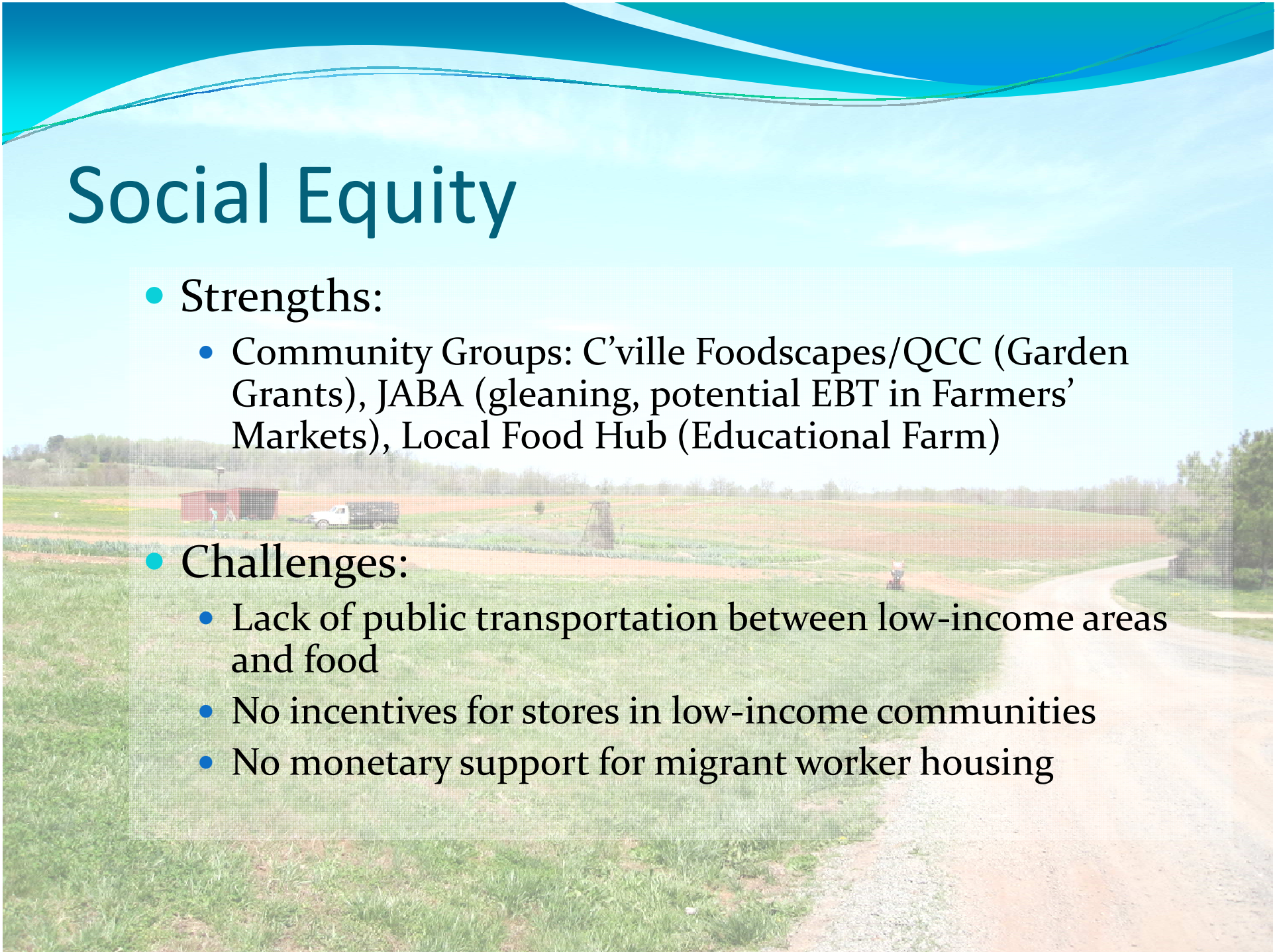
Social Equity

- Strengths:

- Community Groups: C'ville Foodscapes/QCC (Garden Grants), JABA (gleaning, potential EBT in Farmers' Markets), Local Food Hub (Educational Farm)

- Challenges:

- Lack of public transportation between low-income areas and food
- No incentives for stores in low-income communities
- No monetary support for migrant worker housing





Environmental Benefits

- Strengths:

- Government: erosion control plan, riparian buffer, Safer Chemicals Management Procedure,
- Community Group: Panorama Farms (yard compost), Rivanna Water and Sewer Authority

- Challenges:

- No widespread food composting programs/policies
- No limitations on pesticide use

Land Conservation

- Strengths:

- Conservation Easements
- Agricultural and Forestal Districts
- Purchase of Development Rights
- Neighborhood Growth Model

- Challenges:

- Lack of funding for Agricultural Support Person
- No Transfer of Development Rights Program

Community Priorities

- Land-use taxation for farms < 5 acres
- Incubate food-related business
- Agricultural support position
- Local food purchasing policy
- Regional processing center
- Education:
 - Agriculture
 - Nutrition/Cooking



Local Food Hub's Educational Farm: Maple Hill, Scottsville





Local Food Hub's Educational Farm: Maple Hill



City of Charlottesville Food Policy Audit

Lauren Boswell	lab2k@virginia.edu
CoCo Fraiche	amf7n@virginia.edu
Janie Williams	jcw7d@virginia.edu

The City of Charlottesville

Poverty

25% of Charlottesville's
population lives below the
poverty line

Median Household Income

\$31,007

Population Under 18

15%

The State of Virginia

Poverty

10% of Virginia's population
lives below the poverty line

Median Household Income

\$46,667

Population Under 18

25%

Methodology

- Community Contacts:

- **Mayor Dave Norris**
- **Judy Berger**, Community Nutrition Manager, JABA
- **Barbara Yager**, Nutrition Program Coordination/Co-Chair at Thomas Jefferson Health District/COTF
- **Diane Behrens**, Charlottesville School Administration/COTF
- **Karen Shepard**, MACAA, Executive Director
- **Marnie Allen**, MACAA, Hope House Director
- **Anita Shelton**, Head Start Nutritionist
- **Karen Waters**, QCC, Executive Director
- **Susan Pleiss**, QCC Farms! Programming & Outreach Coordinator


- Interview Questions



CHARLOTTESVILLE CITY SCHOOLS



Public Health



- **Challenges**
 - Limited coordination
 - No programs to educate school cafeteria workers
 - No sustainable health education programs for students
 - No technical training program for farming
 - Price of healthy foods
- **Strengths**
 - COTF
 - School Wellness Plan and Strategic Plan
 - Governor's Score Card
 - Community Gardens
 - Grass-roots efforts related to public health
- **Opportunities**
 - Education
 - Comprehensive Plan
 - Farmers' Market

Social Equity

A background image showing two people, a Black woman with colorful braids and a white woman, working in a garden. They are both wearing gloves and looking down at the soil. The woman on the left is wearing a blue shirt, and the woman on the right is wearing a dark shirt. They are in a field with some plants and a fence in the background.

- **Strengths:**

- Living Wage for Charlottesville City Employees
- QCC Farms!
- EBT machines are coming to the Farmers' Market late-April.

- **Challenges**

- Lack of “coordination and cooperation between agencies” is a barrier to achieving a united front for an improved community food system.

Land Conservation and Access to Land for Food Production

- **Strengths**
 - Various Community Gardens
 - Accessible parks managed by Parks and Recreation
 - Vacant Lots
- **Challenges**
 - Limited coordination
 - The Comprehensive Plan
- **Opportunities**
 - Green infrastructure
 - Map of prime agricultural land available in the City

Economic Development

- Strengths
 - Positive reception and allegiance to the Farmer's Market
 - Available retail space
 - Restaurant Culture
- Challenges
 - General Assembly
 - No technical training programs
 - Price of healthy foods
- Opportunities
 - Incentives
 - Jefferson School
 - Finding a permanent location for the Farmer's Market

Environmental Benefits

- **Strengths**
 - **Green City Strategy**
 - **Zoning ordinance**
 - **Comprehensive Plan**
- **Challenges**
 - **Limited coordination**
 - **Zoning**
 - **Composting**
- **Opportunities**
 - **Farmer's Market**
 - **Composting**
 - **Creating a local food map for foraging**
 - **Gleaning**

Community Priorities

- Ensure that nutrition and physical activity are integral to educational curriculum.
- Include food-specific language in the Comprehensive Plan. Mention the goal to reduce obesity in the Charlottesville City Schools Wellness Plan.
- Unify efforts
- Generate more dollar value in food stamps.
- Create a permanent and accessible home for the City Market.
- CATEC programs should include an agricultural track